

Guiding Principles

One member one vote

Our proposal recognises that Sport Australia is looking for all members of Equestrian Australia to have an equal say in the future of the Equestrian Sports in Australia. However we believe that this concept cannot work in regard to the ongoing operation of the sport once the new model is in place as in effect smaller States will have no voice and no certainty that their interests will be protected. In addition once the new Board of EA is in place it will need the ability to make decisions and operate in the moment and will not be in a position to get member voting on all issues.

State Equality

To achieve true member equality and allow each member to be fairly represented there needs to be a balance between giving the members a voice and the ability for each member to be fairly represented. This is because 80% of the members (by number) live on the East Coast of Australia and in fact 40% of the members by number live in NSW. For this reason the future Board of Equestrian Australia needs to represent the members via a democratic election of delegates to represent each State on the Board.

Importance of the Discipline Committees

Given the diverse nature of the various disciplines it is vital that every discipline has a voice in every State where that discipline has a presence. This voice should come in the form of an elected discipline Committee in each State with the Chair of that Committee joining the State Council to ensure that that discipline is represented and has a voice in that State.

Member Representation at EA Level

Each State Council will elect a Chair to represent that State on the EA Board. This will be very different from the current situation as this will be a purely representative role given all administrative functions will be centralised under EA. This will be a Board position with the day to day operation of EA being managed by the CEO.

Equestrian Australia Board

Comprising of State elected Chairs plus 2 -3 appointed Members to ensure a pre-determined skill set is achieved eg Safety & Welfare Finance, legal and Governance.

Chair to be elected by the Board but must have pre-determined skills for the role.

Each State to have an equal vote. All roles and Responsibilities to be clearly outlined and agreed.

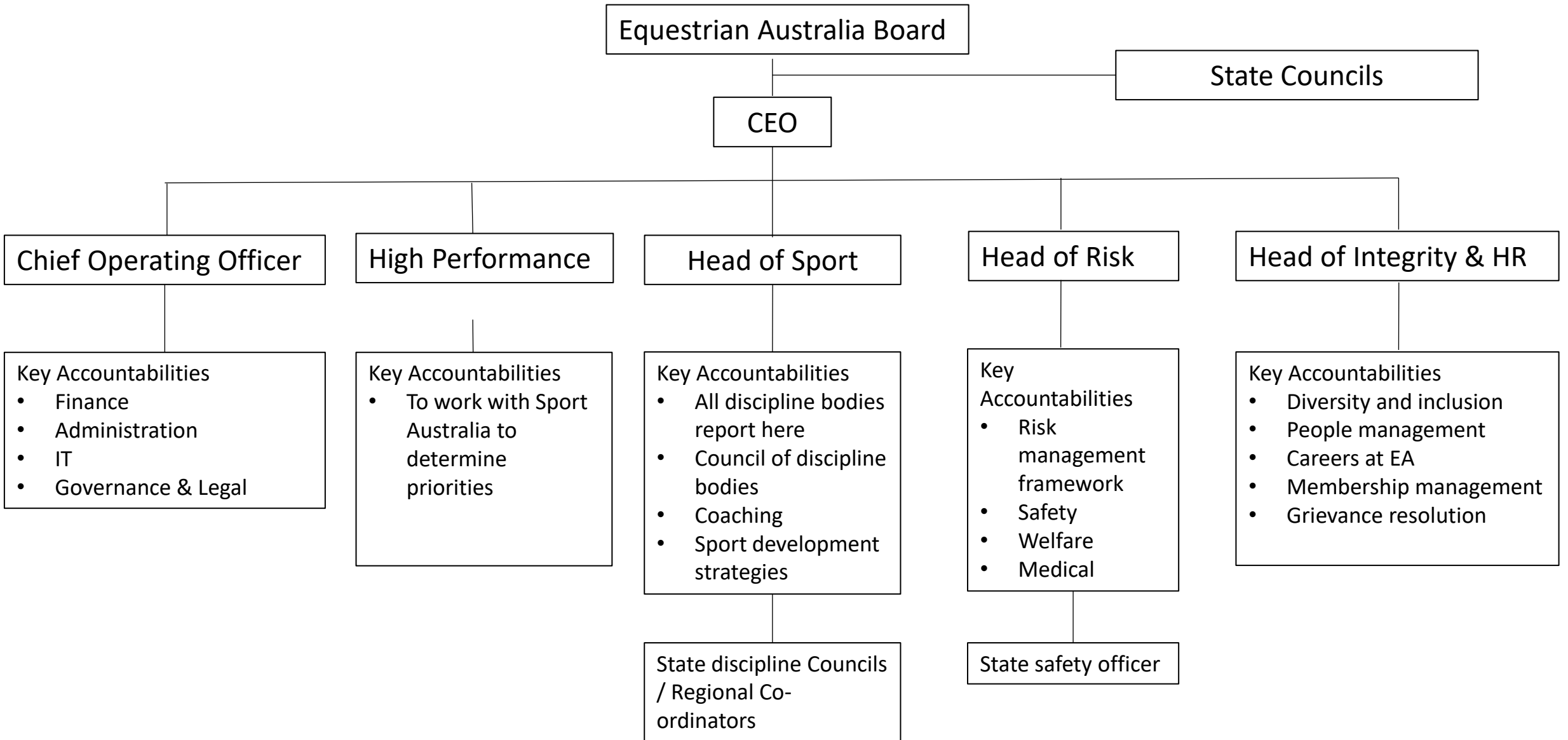
The Board to employ a suitably qualified CEO who will preferably have knowledge of equestrian sport.

EA to employ staff to manage on behalf of all States & Territories:

- All membership and horse registration.
- Finance.
- Safety and Welfare
- Governance and Equality (All States & Disciplines must be treated equally)
- Member Protection (NB State level to have no involvement)
- High Performance
- Overall promotion of Equestrian Sports in Australia with particular focus on;
 - Grassroots Development
 - Interschools
 - Adult Riders
 - Youth Development
- Basic Framework for Accreditation and Education of Coaches and Officials
- Awareness and Adherence to all FEI, AIS, SA and AOC rules and requirements

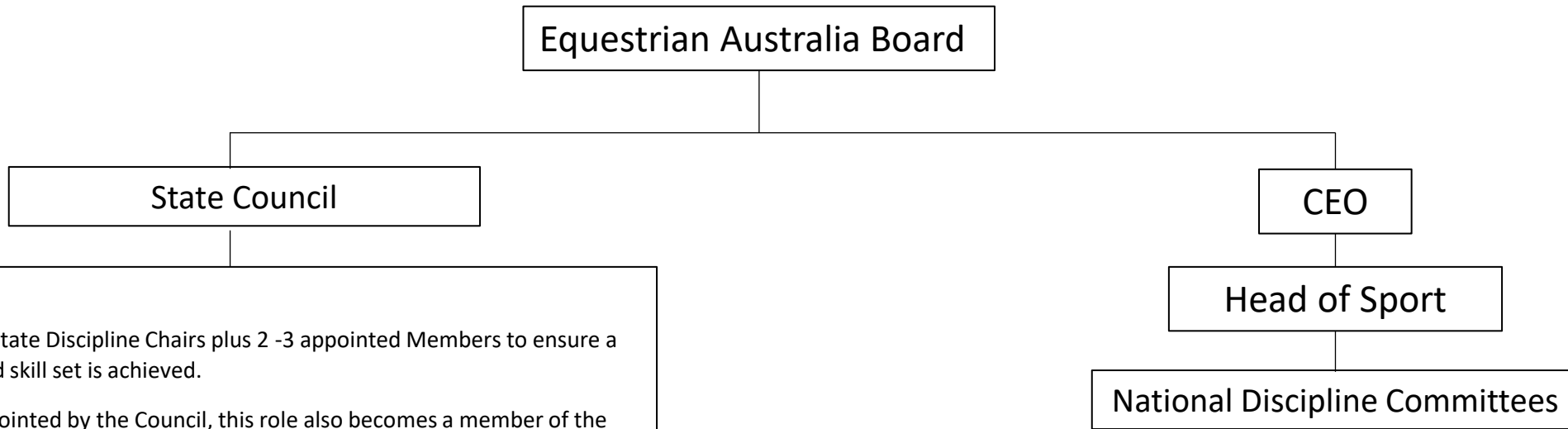
The Board and/or its employees maybe informed by National Committees as required eg current National Coaching Committee.

Equestrian Australia Operating Model



This slide from Option E has been added with the permission of the Engaged Members who prepared that submission.

Role of the State Council and National Discipline Committees



Comprising of State Discipline Chairs plus 2 -3 appointed Members to ensure a pre-determined skill set is achieved.

Chair to be appointed by the Council, this role also becomes a member of the Equestrian Australia Board.

Where possible existing incorporation to remain.

Executive Officer to be employed (Full-time or Part-Time to be as required)

Responsible for:

- Overall promotion of Equestrian Sports in the State incl;
 - Grassroots
 - Interschools
 - Adult Riders
 - Youth Development
- State Grants and Government Relations
- Accreditation of State Level (Championships) and overall co-ordination of Calendar of Events.
- Representative of National Administration functions as required

Comprising the Chairs (or delegate) of each State Discipline Committees. Head of Risk and Head of Sport or delegate to be ex-officio members.

Responsible for:

- Development, Interpretation and Implementation of all National and FEI Discipline specific rules.
- Overview of the Management, Development and promotion of their discipline.
- Safety & Welfare within their discipline and in accordance with rules and guidelines as dictated by FEI and Equestrian Australia.
- Provides framework for athlete development
- Provides framework for athlete development
- Provides framework for Education & Accreditation of Coaching & Officials
- National Calendar of events as Required

Equestrian Australia Board



Chair

State Council



State Discipline Committees

For Example – Dressage NSW or Eventing WA

Persons elected by members &/or appointed as required.

- Oversee Implementation of all FEI and National rules, safety, medical and welfare.
- State promotion and finance
- Co-ordination and Guidance of Organising Committees.
- Overview State Championships for Discipline.
- High Performance under guidance from National
- Co-ordination of local calendar
- Distribution of any Grants or Funding as required.



Chair or Delegate

National Discipline Committees

Comprising the Chairs (or delegate) of each State Discipline Committees. Head of Risk and Head of Sport or delegate to be ex-officio members.

Responsible for:

- Development, Interpretation and Implementation of all National and FEI Discipline specific rules.
- Overview of the Management, Development and promotion of their discipline.
- Safety & Welfare within their discipline and in accordance with rules and guidelines as dictated by FEI and Equestrian Australia.
- Provides framework for athlete development
- Provides framework for athlete development
- Provides framework for Education & Accreditation of Coaching & Officials
- National Calendar of events as Required